

LEADED, LOW FREQUENCY kHz BAND CERAMIC RESONATORS

LXZT series

Pb in ceramic
(exempt per RoHS 2002/95/EC Annex (7))

RoHS
Compliant



Size varies

FEATURES:

- Standard frequency range from 190kHz to 1250kHz.
- Low cost timing solution.
- Low resonant impedance.

APPLICATIONS:

- Microprocessor clocks.
- Electrical appliances.
- Remote controls.

STANDARD SPECIFICATIONS:

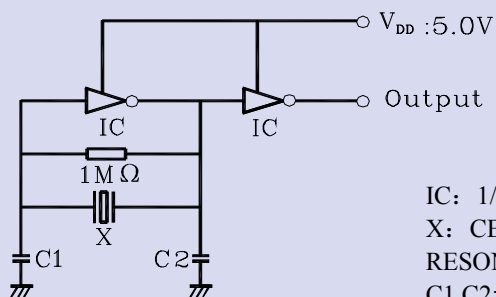
Item	Requirement
Oscillation Frequency (Fosc)	430.00kHz ~ 455.00kHz 700.00kHz ~1250.00kHz
Resonant Impedance	See Table 2.1
Frequency Tolerance and stability	See Table 2.1
Withstanding Voltage (V)	50 (DC , 1 min)
Rating Voltage	
(1) D.C. Voltage	6 V.D.C. max
(2) A.C. Voltage	15 Vp-p. max
Load Capacitance	See Table 2.1
Insulation Resistance	100M Ω min. (10V DC 1min)
Operating Temperature	-25°C to + 85°C
Storage Temperature	-40°C to +85°C
Aging Rate (Fosc)	$\pm 0.3\%$ (From initial value)

* Please contact ABRACON for custom frequencies, tighter stability and/or wider temperature range

Table 2.1

Frequency Range (kHz)	C1 (pF) $\pm 20\%$	C2 (pF) $\pm 20\%$	Resonant Impedance	Frequency Stability at -25°C to +85°C	Freq. Tolerance at 25°C
430 - 455	100	100	20 Ω max.	$\pm 0.3\%$	± 2.0 kHz
700 - 999	100	100	70 Ω max.	$\pm 0.3\%$	$\pm 0.5\%$
1000 - 1250	100	100	100 Ω max.	$\pm 0.3\%$	$\pm 0.5\%$

TEST CIRCUIT:



IC: 1/6TC4069UBP $\times 2$
X: CERAMIC
RESONATOR
C1,C2: Load Capacitance

OPTIONS & PART IDENTIFICATION:

LXZT - Frequency

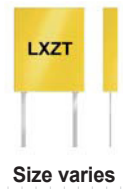
Frequency (kHz)

LEADED, LOW FREQUENCY kHz BAND CERAMIC RESONATORS

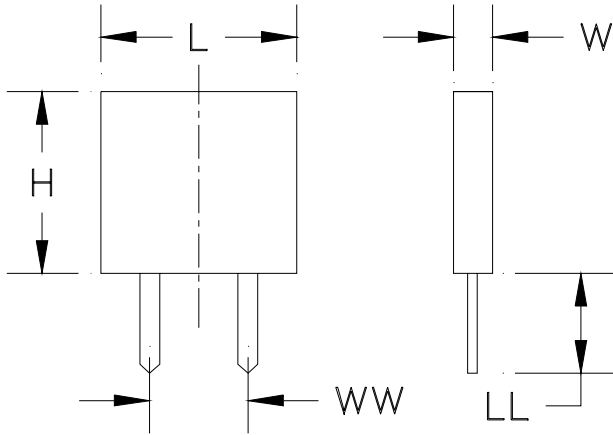
LXZT series

Pb in ceramic
(exempt per RoHS 2002/95/EC Annex (7))

RoHS
Compliant



OUTLINE DIMENSIONS



Dimension : Inches (mm)

Frequency Range	L	W	H	LL	WW
430-455 kHz	0.28 (7.0) ref.	0.14 (3.5) ref.	0.35 (9.0) ref.	0.16 (4.0)/0.24 (6.0) ref.	0.20 (5.0) ref.
700-1250 kHz	0.20 (5.1) ref.	0.09 (2.2) ref.	0.25 (6.3) ref.	0.16 (4.0) ref.	0.10 (2.5) ref.

CAUTION

- Do not apply excess mechanical stress to the component body or terminations. Do not attempt to re-form or bend the components as this will cause damage to the component.
- This component is not hermetically sealed. Do not clean or wash the component.
- Reflow soldering: Do not use strong acidity flux, such as flux with chlorine content of greater than 0.2wt% during reflow Soldering.
- Do not expose the component to open flame.
- This specification applies to the functionality of the component as a single unit. Customers are advised to insure that the component is thoroughly evaluated in the particular application.
- Shelf life: The warranted shelf life of this product is six months after the delivery date under the conditions of sealed, unopened, original packaging.
- Storage conditions: If the product is to be stored for a period greater than six months after the delivery date, it is recommended that customers confirm the solderability and characteristics for the product prior to use.
- This product is not recommended for use in the following applications: Automotive, Medical, Military, Safety, or any other high-reliability, life-dependant application. Contact Abracon Corporation prior to using this product when in doubt.

ATTENTION: Abracon Corporation's products are COTS – Commercial-Off-The-Shelf products; suitable for Commercial, Industrial and, where designated, Automotive Applications. Abracon's products are not specifically designed for Military, Aviation, Aerospace, Life-dependant Medical applications or any application requiring high reliability where component failure could result in loss of life and/or property. For applications requiring high reliability and/or presenting an extreme operating environment, written consent and authorization from Abracon Corporation is required. Please contact Abracon Corporation for more information.

ABRACON IS
ISO 9001 / QS 9000
CERTIFIED



ABRACON
CORPORATION

Visit www.abracon.com for Terms & Conditions of Sale **Revised: 08.23.10**
30332 Esperanza, Rancho Santa Margarita, California 92688
tel 949-546-8000 | fax 949-546-8001 | www.abracon.com